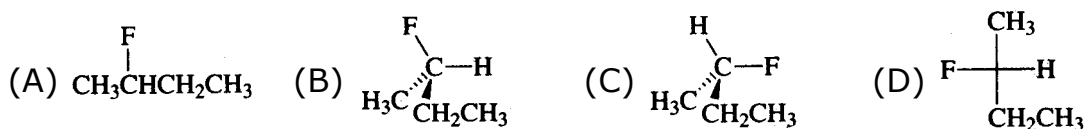
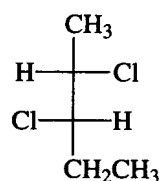


R-S- CONFIGURATION

Q.1 The structure of (S)-2-fluorobutane is best represented by

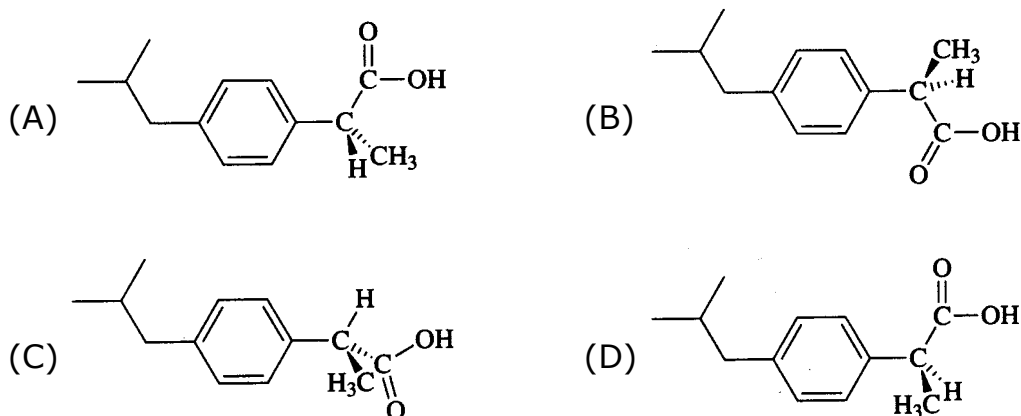


Q.2 The 2, 3-dichloropentane whose structure is shown is



(A) 2R, 3R (B) 2R, 3S (C) 2S, 3R (D) 2S, 3S

Q.3 The S enantiomer of ibuprofen is responsible for its pain-relieving properties. Which one of the structures shown is (S)-ibuprofen ?

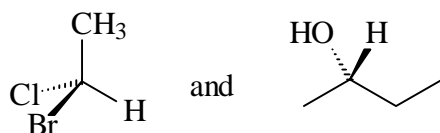


Q.4 Rank the following groups using the cahn-Ingold-Prelog system (4 is highest) :



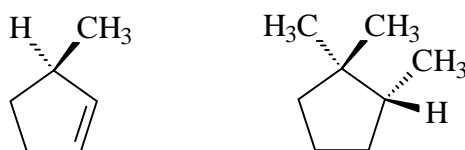
	4	3	2	1		4	3	2	1
(A)	C	B	D	A	(B)	A	D	B	C
(C)	C	D	A	B	(D)	C	D	B	A

Q.5 Give the configurations, respectively, of the following two molecules.



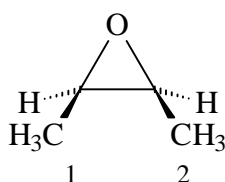
- (A) R and R (B) R and S (C) S and S (D) S and R

Q.6 Give the configurations, respectively, of the following two molecules.



- (A) R and R (B) R and S (C) S and S (D) S and R

Q.7 Give the configurations of carbons 1 and 2, respectively, in the structure shown below.

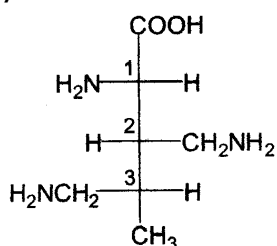


- (A) R and R (B) R and S (C) S and S (D) S and R

Q.8 Priority sequence of which alkyl group is maximum ?

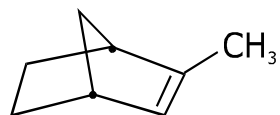
- (A) Tertiary (B) Secondary (C) Primary (D) Methyl

Q.9 Assign stereochemistry to the following compound.



- (A) 1S, 2S, 3S (B) 1S, 2S, 3R
(C) 1S, 2R, 3R (D) 1R, 2S, 3S

Q.10 Assign R & S configuration.



(A) $C_1 = S, C_4 = R$

(B) $C_1 = S, C_4 = S$

(C) $C_1 = R, C_4 = S$

(D) $C_1 = R, C_4 = R$

ANSWER KEY

Q.No.	1	2	3	4	5	6	7	8	9	10
Ans.	C	D	D	C	B	A	B	A	A	A